

DRIVING A SEA CHANGE

Environment & Sustainability Annual Report 2025

June 2026

Sandra Kilroy, Sr. Director, E&S

Sarah Cox, Director, Aviation E&S

Sarah Ogier, Director, Maritime E&S

Mallory Hauser, Program Manager, E&S Communications and Reporting



**BOLD LEADERSHIP
PARTNERSHIPS
DATA DRIVEN
EQUITY
STEWARDSHIP
OPPORTUNITY**

**Environment
& Sustainability**

Building a Sustainable and Resilient Port

1. Reduce emissions, waste, and other environmental effects from Port operations
2. Continue leading edge programs to steward our land and water resources, remediate contaminated properties and manage stormwater to protect water quality
3. Deliver permitting and regulatory compliance to ensure sustainable and resilient port operations and infrastructure
4. Build Port's influence in state, national and international environmental policy
5. Establish Port as a premier regional agency to attract clean fuels for maritime and aviation
6. Engage communities and increase partnerships with stakeholders

2025 Accomplishments

REMOVED
PFAS

SHORE POWER
RECORD UTILIZATION

CRUISE BIOFUEL DEMONSTRATION PROJECT

FAST CHARGERS
INSTALLED AT SEA

SALMON HABITAT CREATED

6,800 TREES
& SHRUBS PLANTED

SOUND INSULATION
REPAIR & REPLACE
PILOT PROGRAM

PNW2AK GREEN CORRIDOR
GREEN METHANOL STUDY

QUIET SOUND

REDUCTION IN PORT
CONTROLLED EMISSIONS

PROGRAMMATIC
PERMITS

SEATTLE WATERFRONT
CLEAN ENERGY STRATEGY

ADAPTSEA

68,000 TONS
CONSTRUCTION
WASTE DIVERTED

\$3M IN FEDERAL
CLEAN PORTS FUNDING



Reporting Categories

1. Healthy Lands and Habitat
2. Cleaning Up Contaminated Sites
3. Protecting Water Quality
4. Reducing Waste
5. Charting the Course to Zero
6. Building Resilient and Sustainable Infrastructure
7. Environmental Permitting and Planning
8. Lessening the Impact of Aircraft Noise
9. Practicing Equity, Diversity, and Inclusion
10. Engaging the Community

HEALTHY LANDS AND HABITATS

Construction completed along Miller Creek

- **450** feet of Salmon habitat
- **1.4** acres of floodplain create
- Fish barrier replaced

Protecting wildlife

- Monitoring underwater noise for our Southern Resident killer whales

6,800 trees and shrubs planted

Habitat and kelp research



CLEANING UP CONTAMINATED LANDS

\$23M in cost recovery

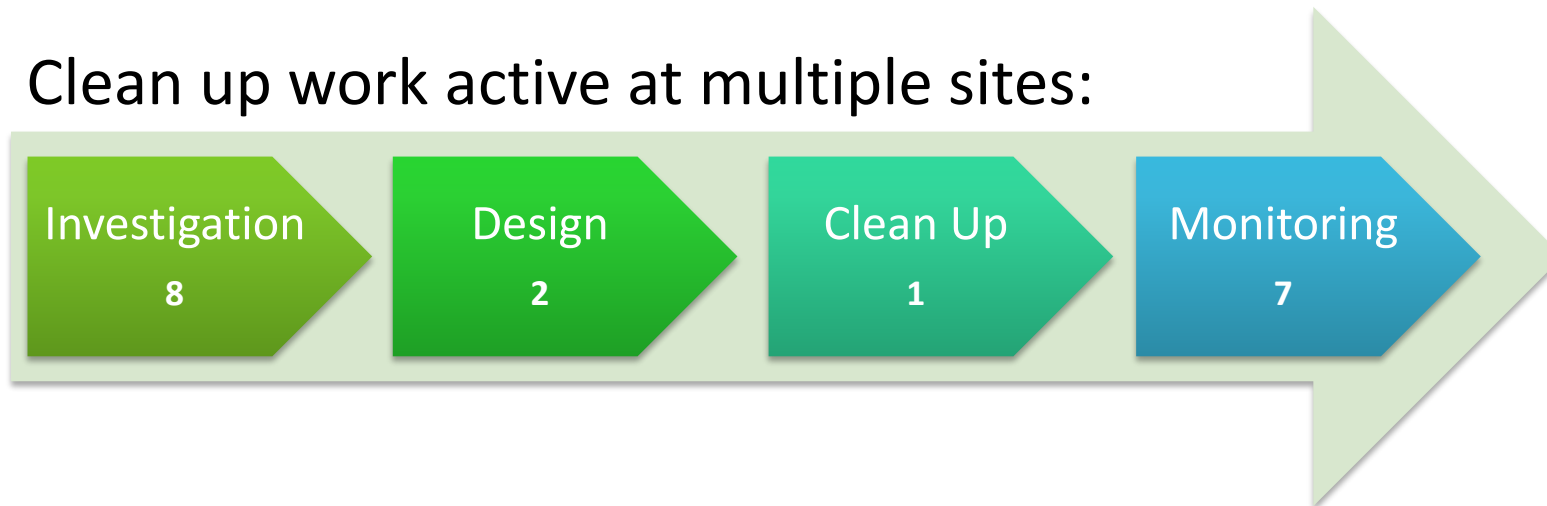
East Waterway Enters Final Design

- A significant regulatory milestone was reached in 2025

Leading on PFAS Elimination

- **11,800** gallons in 2025

Clean up work active at multiple sites:



PROTECTING WATER QUALITY

Met maritime stormwater permit requirements

Met over **99%** of airport stormwater permit conditions

Maritime stormwater system rehabilitation progress



31 derelict vessels removed or resolved

Upgraded Remotely Operated Vehicle now enables high-resolution 3D mapping



REDUCING WASTE

Municipal Solid Waste Diversion (60% goal)

47% (4,481 tons) of waste from SEA terminals

59.7% (1,792 tons) of waste from maritime facilities

Construction Waste Diversion (90% goal)

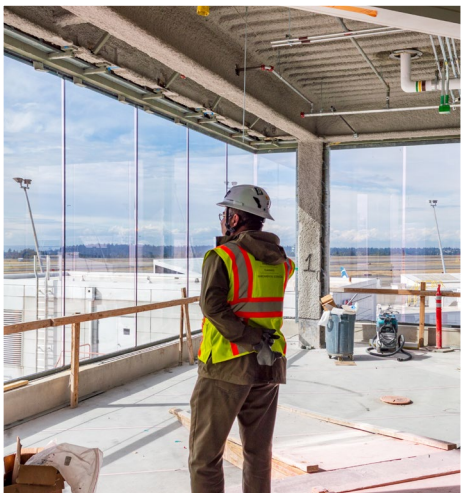
99% from SEA Airport capital projects

93.7% Maritime capital projects

Expanded Reuse/Recycle/Donation

- **25,000** meals and **3,000** lbs. of personal care products donated
- **1,590 tons** of waste collected for composting; **14% increase** from 2023
- **177 tons (46,028 gallons!)** of cooking oil recycled into renewable diesel and SAF

RESILIENT AND SUSTAINABLE INFRASTRUCTURE



Low-carbon infrastructure in action

- SEA C Concourse expansion
- South Concourse Evolution, in design
- Maritime Innovation Center - Constructed to Living Building standard

6 major projects, **738,000** square feet, are pursuing prestigious third-party certifications

CHARTING THE COURSE TO ZERO | SCOPE 1 & 2

Scope 1 & 2 GHG

- **44%** reduction from the 2005 baseline

Feasibility study completed

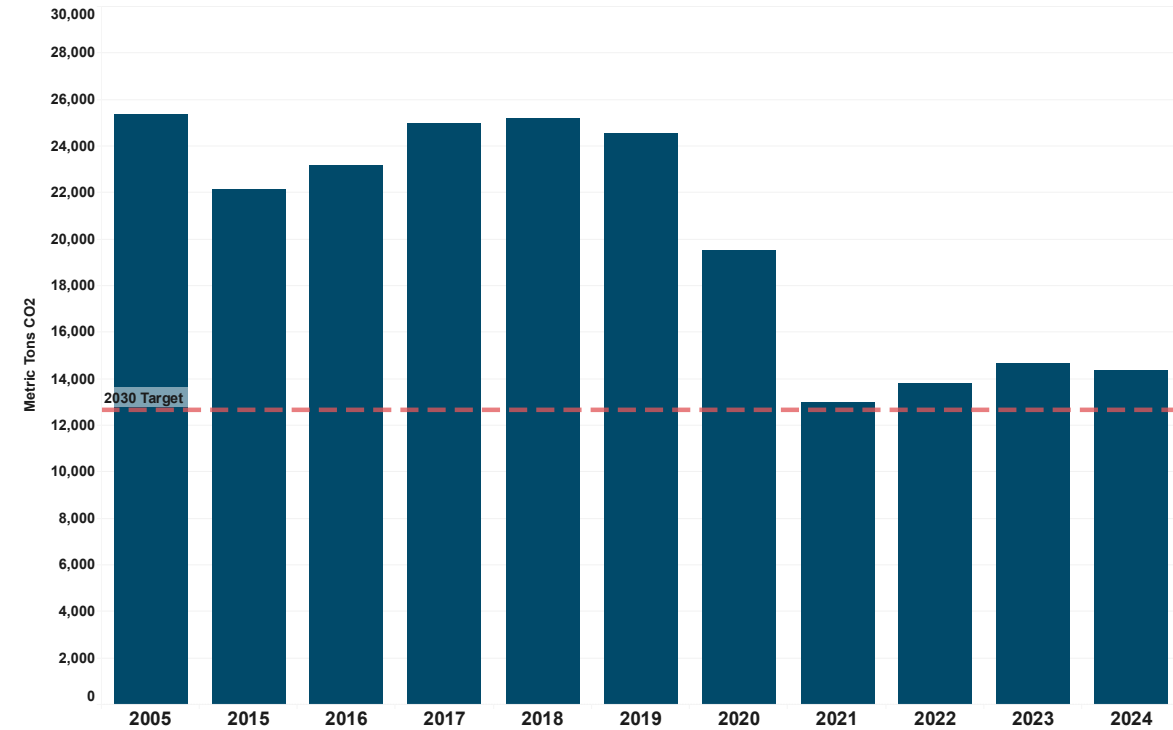
- Evaluation of SEA's central mechanical plant and decarbonization alternatives

Renewable Natural Gas

- Bridge strategy, leveraging technology while building electric infrastructure for tomorrow's zero-emission operations

82 electric fleet vehicles (13% AV fleet, 14% Maritime fleet) & progress on EV charging infrastructure

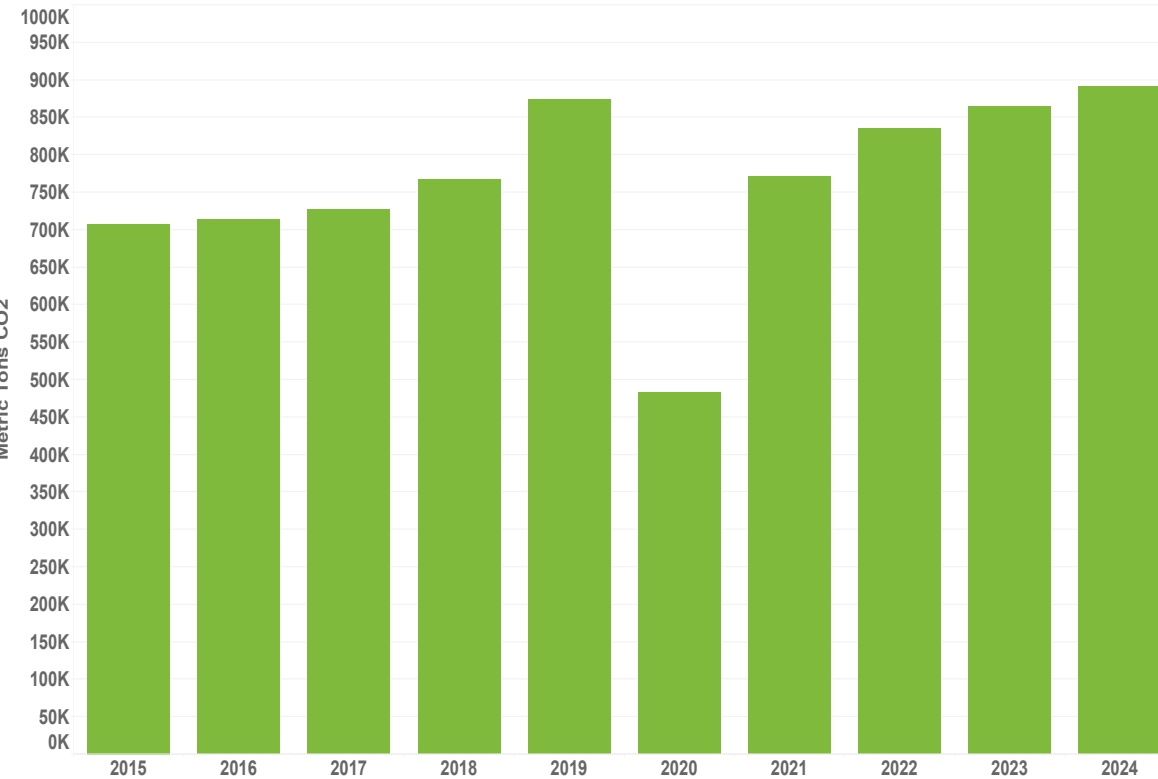
Port-wide Scope 1 & 2 Emissions (2024)



44% reduction from baseline

CHARTING THE COURSE TO ZERO | SCOPE 3

SEA Airport GHG Emissions (2024)



15% increase from baseline

Highest-ever PCA connection rates

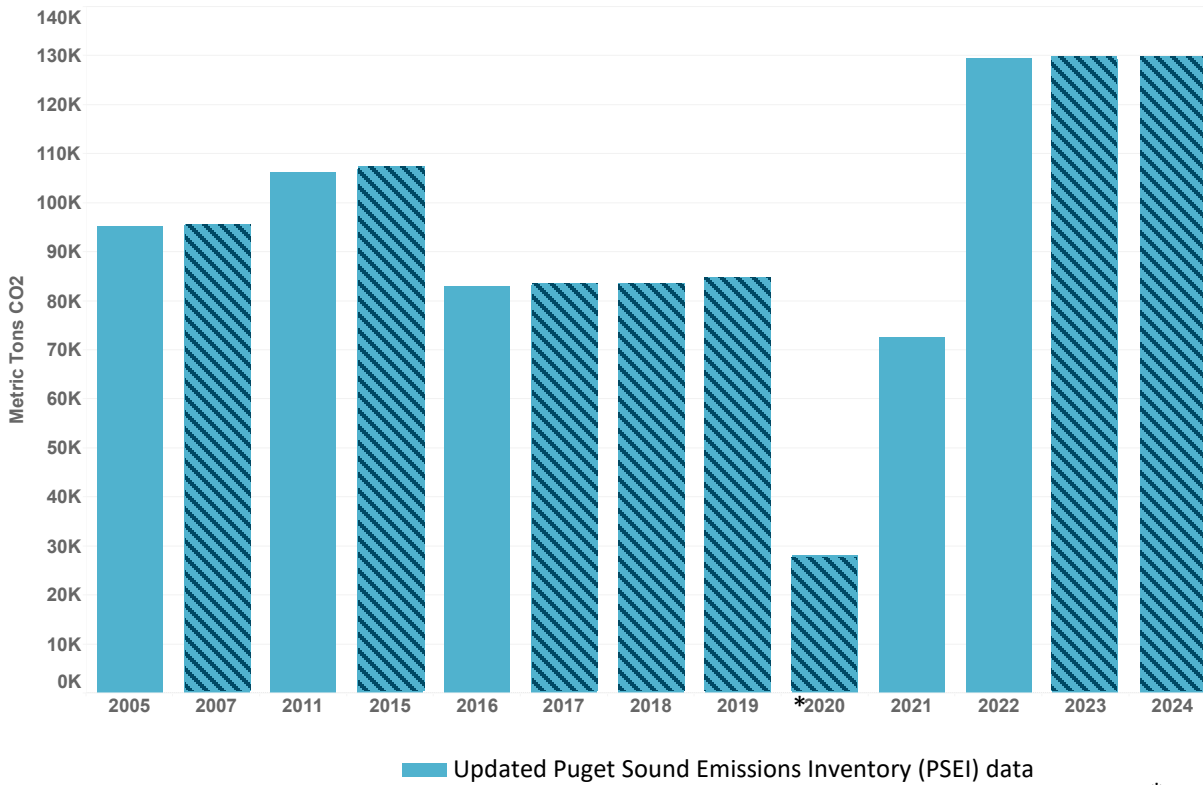
- **63%** of aircraft operations connected
- Alaska increased connections **10%** and Delta increased by **6%** compared to 2024
- **10** fast chargers installed for TNC's at SEA
- **22%** of TNC activity at SEA is now electric, up from **<1%** in 2020

Policy Wins for Sustainable Aviation Fuel

- State funding for SAF research and development
- Federal extension to Section 45Z Clean Fuel Production Credit through 2031

CHARTING THE COURSE TO ZERO | SCOPE 3

Seaport and Economic Development GHG Emissions (2024)



31% increase from baseline

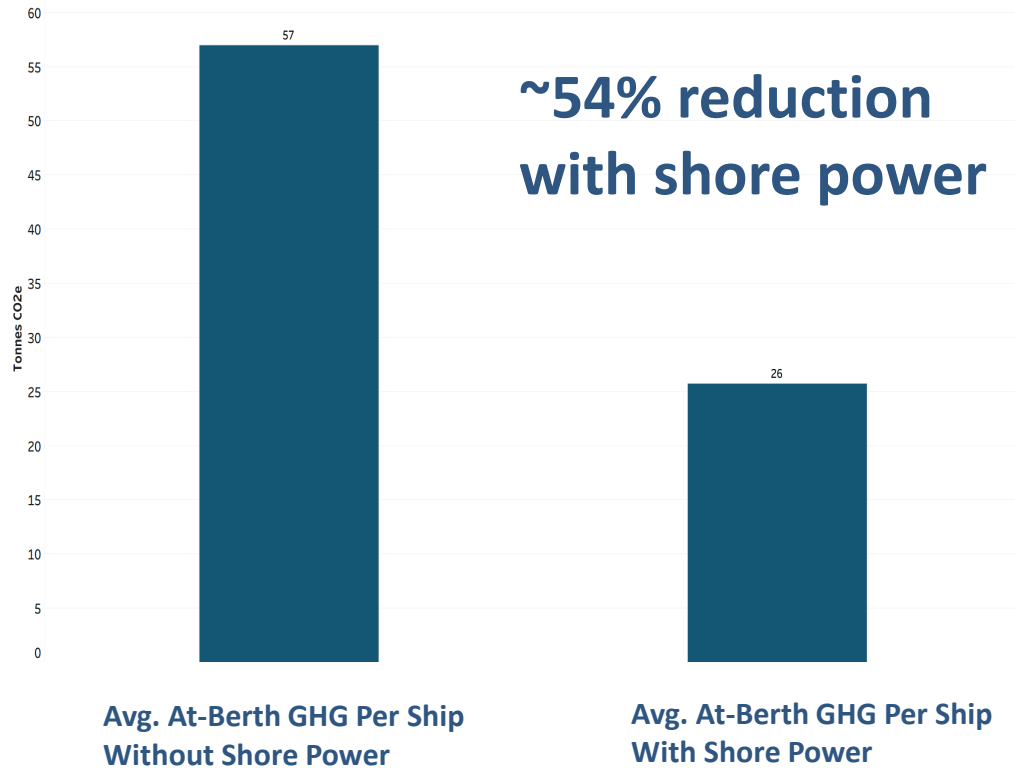
* No cruise, only grain ships included in Ocean Going Vessel emissions (2021 PSEI used as proxy)

Advancing electrification and sustainable maritime fuels

- Secured EPA Planning Grant
- Launched Sustainable Fuel Collaborative
- Final Seattle Waterfront Clean Energy Strategy
- Green Corridor – Feasibility Study progress

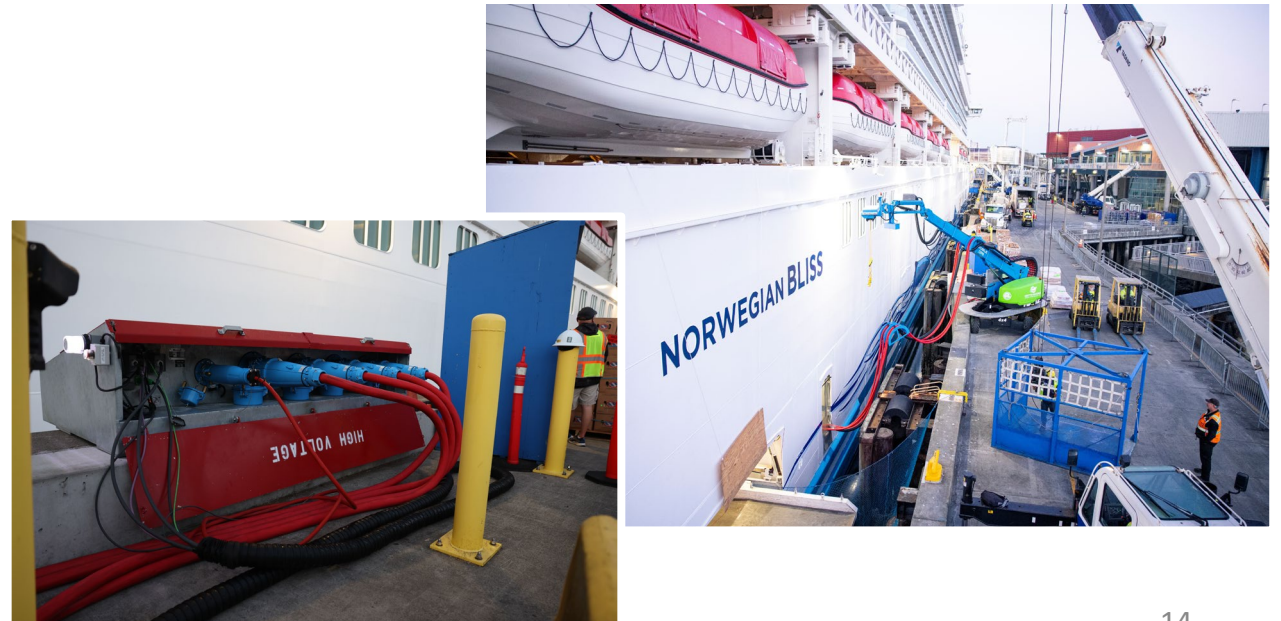
CHARTING THE COURSE TO ZERO | SCOPE 3

Cruise At Berth GHG Reduction



First full year with all three cruise berths equipped with shore power

- A record **68%** of all cruise calls plugged in
 - **44%** connections increase from 2024
 - **70%** of homeport calls connected
- 203 connections avoided **6,400** MT CO2e and **1.74** MT of diesel particulate matter



ENVIRONMENTAL PLANNING AND PERMITTING

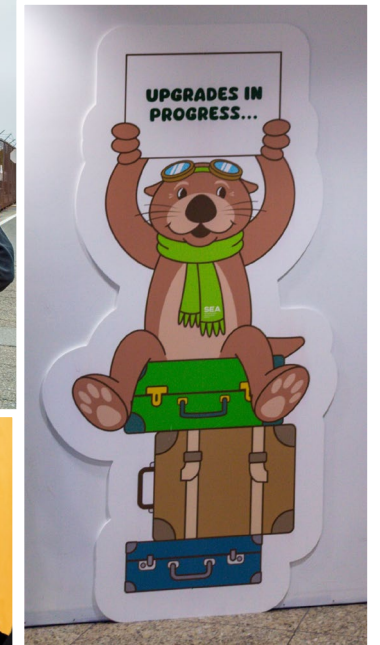
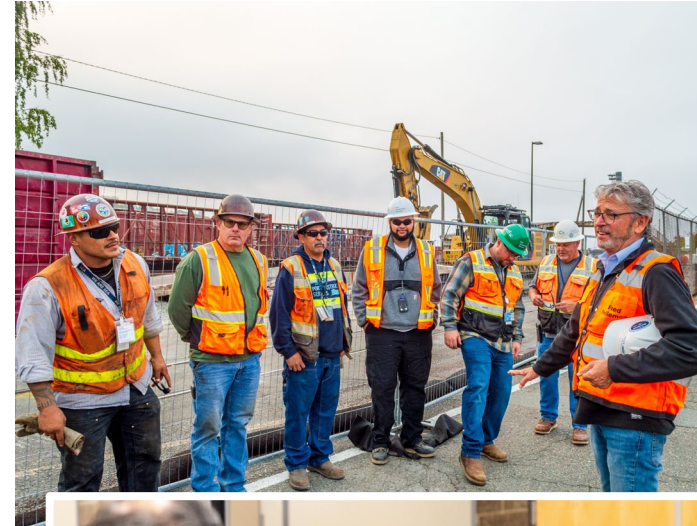
Sustainable Airport Master Plan

- FAA published the Final NEPA Environmental Assessment

Comprehensive Repair and Maintenance Permit for Maritime

- **10-year** permit secured!

AdaptSea Waterfront Resilience Partnership & Duwamish River Sea Level Rise Recommendations Report completed



LESSENING THE IMPACT OF AIRCRAFT NOISE

Sound Insulation Repair and Replace Pilot Program

- **471** homes received outreach
- **117** homes acoustic tested
- **5** homes tested eligible

Part 150 Sound Insulation

- **200** apartment units completed sound insulation
- **2** places of worship underway
- Technical Noise Exposure Maps for 2024 Part 150 Study completed

Fly Quiet Awards 2025:

Air Canada, Frontier Airlines and Icelandair



PRACTICING EQUITY, DIVERSITY, AND INCLUSION

Investing in Diverse Businesses

- Port Wide **\$151M (15%)** in spend went to **354 WMBEs**

Duwamish Valley Career Navigation Program launched

Environmental justice

- Application of Port Equity Index to programs and projects



ENGAGING THE COMMUNITY



Over **90** community events, including
13 boat tours

\$500,000 in grants from the South
King and Port Communities Fund
Environmental Improvements Program



Strengthening tribal relationships

Ongoing work with PCAT, StART and
other community groups

THANK YOU
Commissioners,
Port leadership,
employees, and
all our partners.

