

Item No.	11a_supp
Date of Meeting	April 28, 2026

S Concourse Evolution (SCE) Program Update



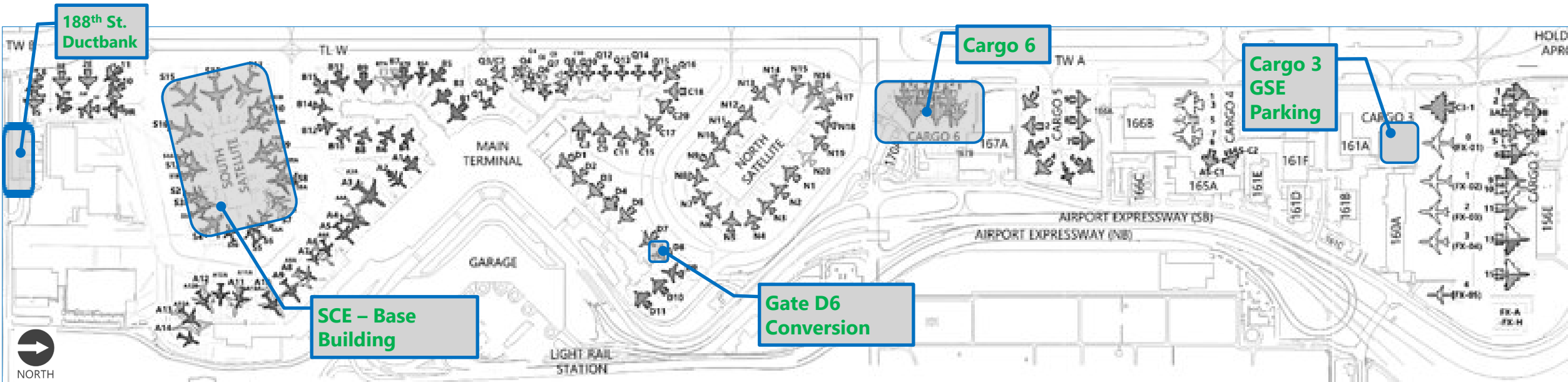
Background

- The SCE Project is a critical infrastructure renewal effort at SEA, addressing the 53-year-old facility's seismic, structural, and code compliance needs while enhancing the passenger experience. SCE project will renew this important regional facility through two main objectives:
 - Extend the useful life and bring the facility up to current code including structural and seismic upgrades
 - Re-purpose space left vacant by services relocated to the International Arrivals Facility (IAF) and enhance the passenger experience by increasing amenities, expanding dining and retail (ADR) opportunities, and elevating the level of service.



Facilitating Projects

- Convert existing parking area at Cargo 3 for GSE Storage
- Improve existing Cargo 6 location to allow for Passenger Operations
- Convert existing Gate D6 from a bussing gate back to a Passenger Loading Bridge
- Construct duct bank from Cargo 7 to Generator Yard and across 188th St to S Main Substation

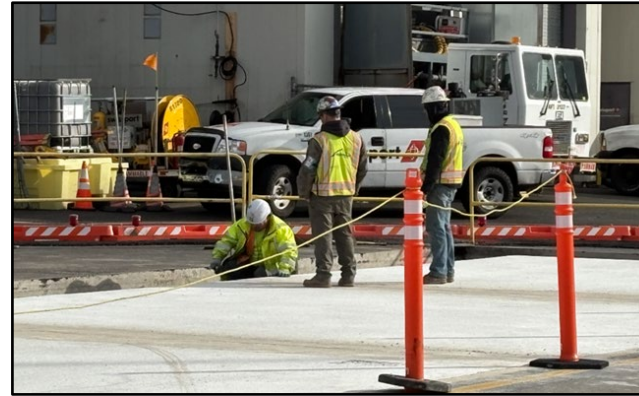


Facilitating Projects – Active Construction

Cargo 3



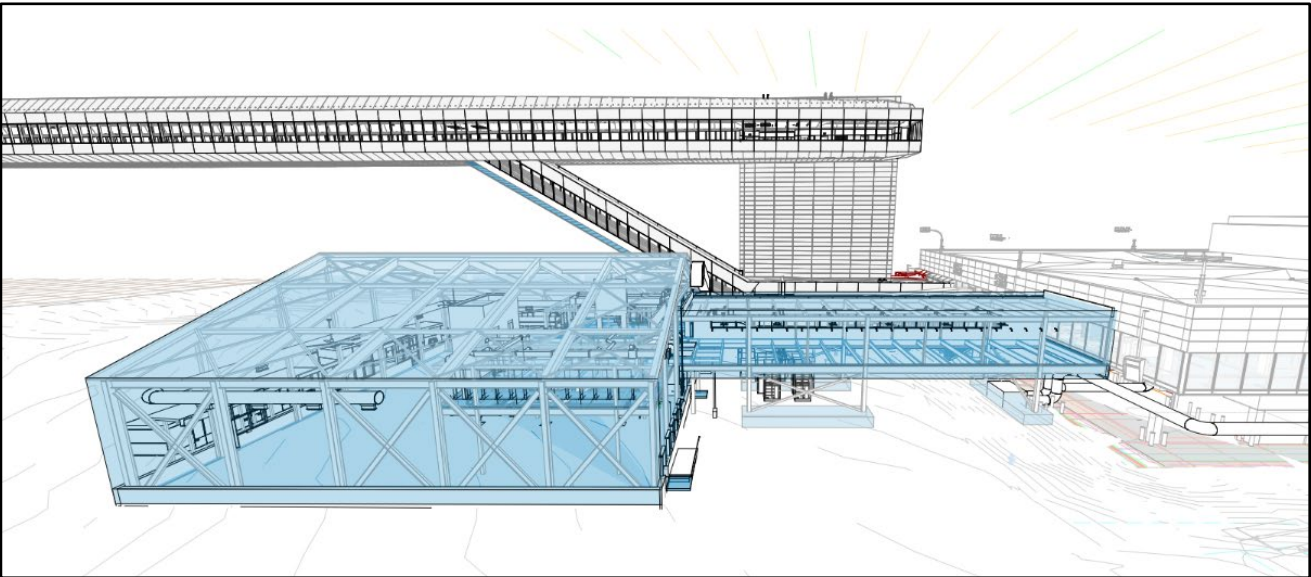
Cargo 6



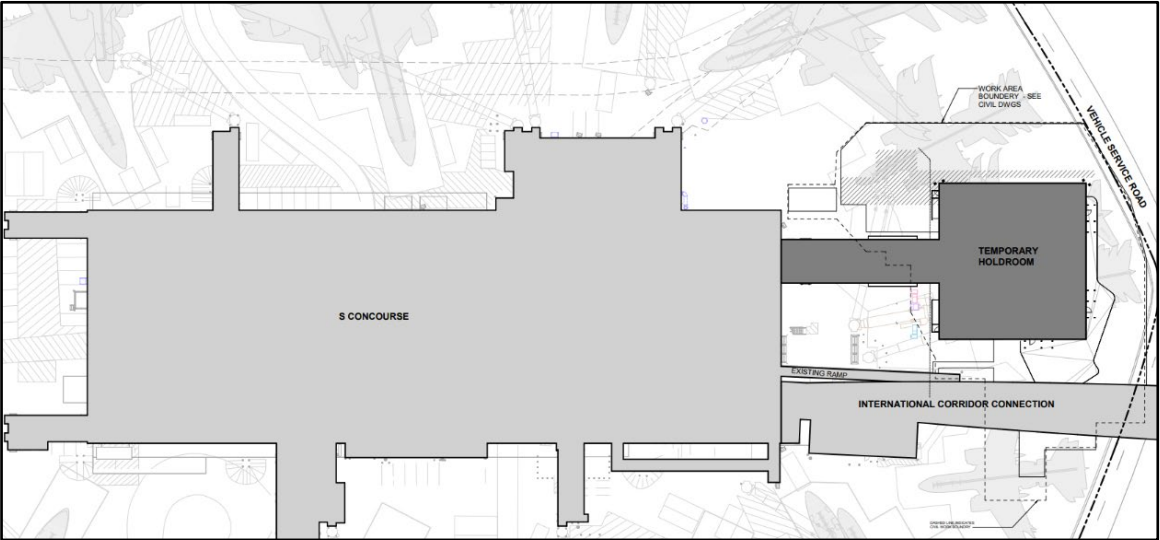
Gate D6



Supporting Project – Interim S Annex



View looking South



Site Map



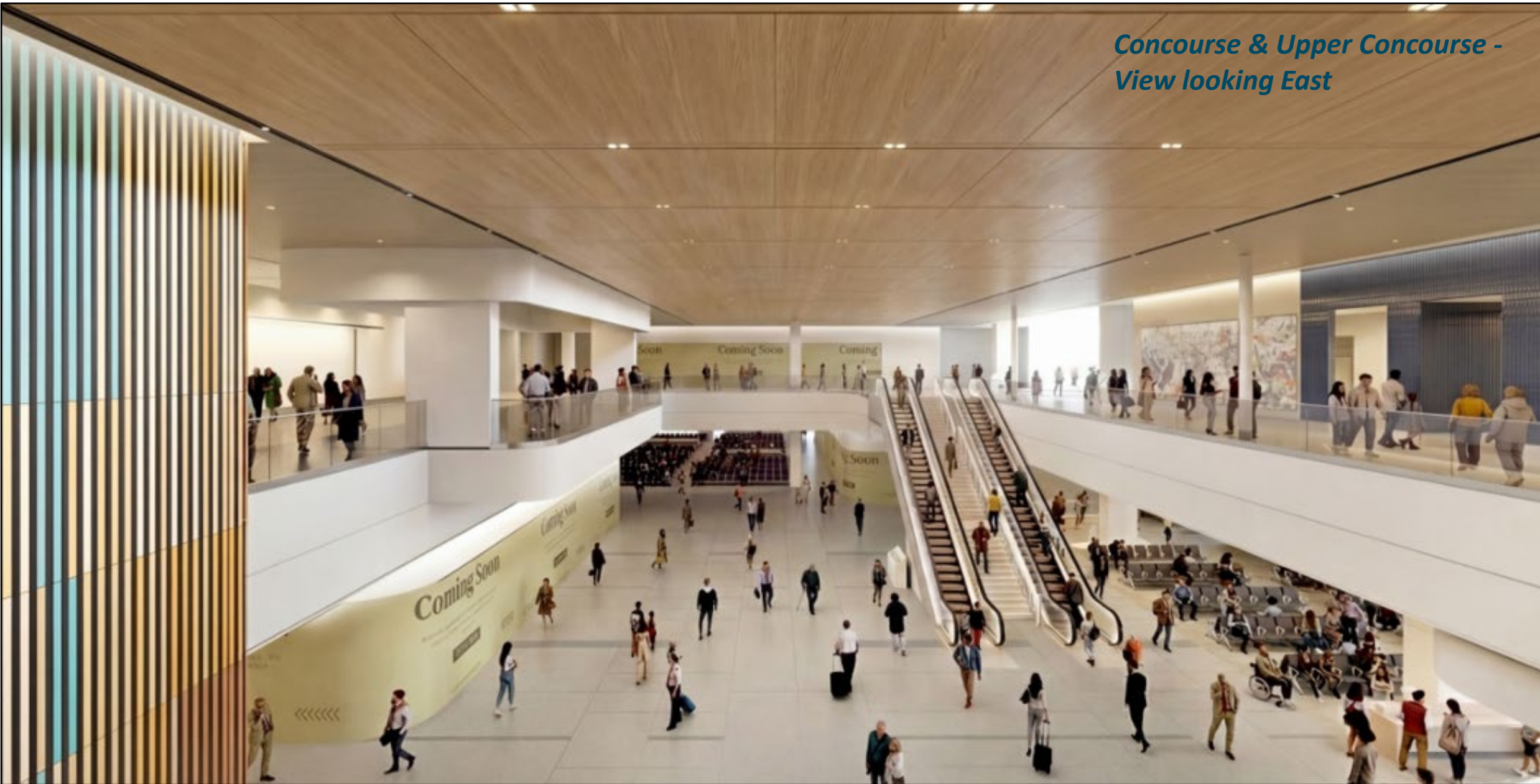
Northeast Perspective



North Perspective



*Concourse & Upper Concourse -
View looking East*



*Circulation from STS Train level
to Concourse*



Concourse Holdroom



Sustainability Status

- 60% Sustainable Design Strategies (SDS) review has been completed
 - Tracking:
 - 12% reduction in annual energy consumption
 - 50% reduction in annual operational carbon emissions
 - 25% reduction in embodied carbon emissions
 - 23% reduction in annual potable water consumption
 - Equity inclusions:
 - Food donation center
 - Employee break room
- Pursuing the United States Green Building Council's (USGBC) Leadership in Energy and Environmental Design (LEED) Silver Certification (minimum)

Budget/Schedule Status

- Project schedule improved to 7 years and 10 months, with substantial completion 4Q 2034
 - Previous 30% schedule was 9 years and 4 months, with completion 1Q 2036
- Program budget established at ~\$2.5B
 - Reduced from 30% estimate range of \$2.9 - \$3.3B

Next Steps

1

APR 28, 2026
Briefing on Program

2

MAY 26, 2026
ACTION:

- Design/PM/CM services through 2027
- Special Testing & Inspection funding
- Construction authorization for 188th St Ductbank (Landside)

3

AUG 2026
ACTION:
MACC Package 1 -
Temporary Facilities: Load Dock, International Corridor, S5 Early Procurement VT & PEB, and other temp facilities

4

SEP 2026
ACTION:
MACC Package 2 -
Early Works - Phase 1: Baggage, Demo, RMM, Civil, Sub/ Superstructure, Access Shaft, Main Elec Room

5

OCT 2026
ACTION:
MACC Package 3 -
Early Procurement Pkg:
Vertical Transportation, PLB, Long-lead Mech & Elec equip, Curtainwall System, S5 balance of work

Note: Action items subject to change

Questions?

Thank you!