

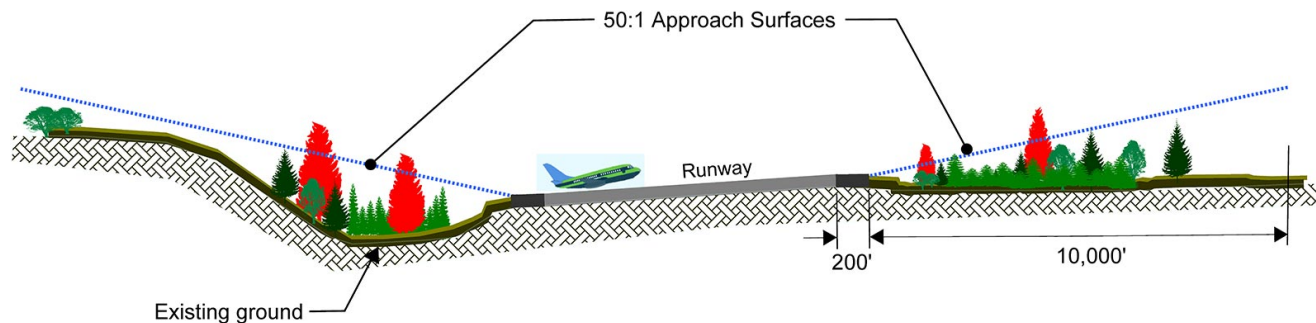
| | |
|-----------------|------------------|
| Item No. | 11a_supp |
| Date of Meeting | January 13, 2026 |

2024 Flight Corridor Management Program - Briefing

Seattle-Tacoma International Airport (SEA)



Flight Corridor Safety Program - Purpose



The FAA requires the Port of Seattle to ensure there are no obstructions on or around SEA that could affect flight safety.

Washington State law declares that the creation or establishment of airport hazards is a “public nuisance”.

Flight Corridor Management Program - Overview

- An ongoing program to remove obstructions (generally, trees) around SEA to maintain safety during takeoffs and landings and replant in their place, native, lower height trees.
- The Port has already replanted in excess of 12,000 trees as part of the overall program.
- Obstructions either are penetrating SEA's airspace or are expected, within approximately the next five years.
- 2024 Project identified 197 Obstructions.
- Program is updated every five years, and the next analysis will be conducted in 2029.



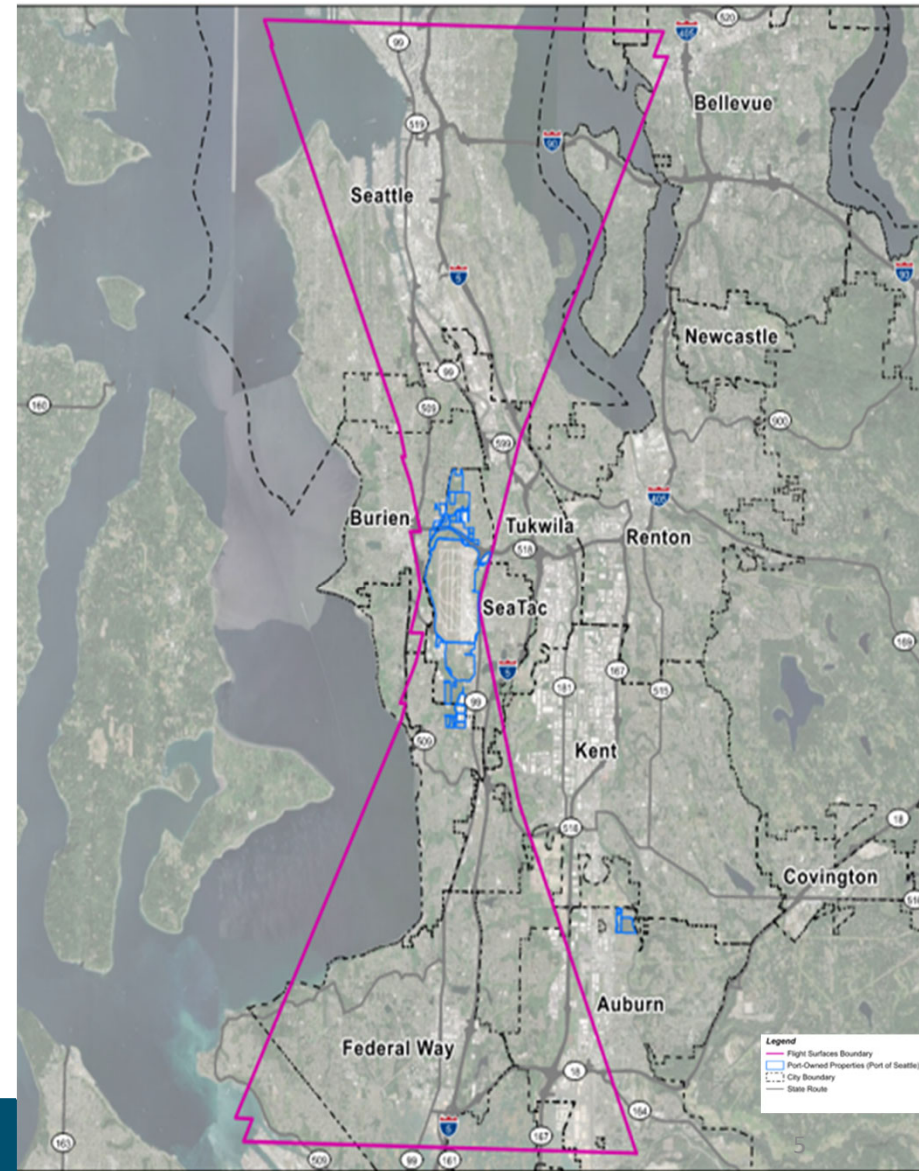
Environmental Commitment

- State Environmental Policy Act (SEPA) is complete.
- Port jurisdiction, apply SEA tree replacement policy directive (4:1 functional replacement) for Port jurisdiction.
- For City jurisdictions, apply City replacement standards, including Port property in city jurisdiction.
- City standards typically require on-site replacement and/or in-lieu fee. Replacement ratios vary.
- Utilize best management practices to minimize environmental impacts.



FCMP Survey Boundaries

Boundaries are determined by taking FAA safety of flight surfaces to determine the outer limits and elevation limits.



Obstruction Identification Process

Step 1. Identify FAA defined flight surfaces

Step 2. Create a model of identified surfaces

Step 3. Data Collection & Evaluation

- Aerial photogrammetry used to overlay images with flight surfaces to create a 3D model.
- Pinpoints current and future obstructions (within the next 5 years).
- Field evaluation performed to confirm obstructions.
- Confirm obstruction height, ground elevation, tree size, tree species, location, property owner.

2024 Flight Corridor Management Program

Tree Removal and Estimated Replacement

| Property Ownership/ Jurisdiction | Obstruction Trees Removed | Trees Removed Incidental to Construction | Total Trees Removed | Tree Replacement Standard | Estimated Replacement quantities | |
|--|---------------------------|--|---------------------|--|---|---------------------------------|
| | | | | | Replacement | In-Lieu |
| Port Property / Port jurisdiction | 153 | 0 | 153 | Port's Tree Replacement Policy Directive* 4:1 functional replacement | 612 replacement credits (334 tree plantings) | Not applicable |
| Burien Property/ Burien Jurisdiction | 5 | 1 | 6 | Per City of Burien's requirements 3:1 replacement | 9 tree plantings | AND 9 trees In-lieu fee |
| SeaTac Parks Property/ SeaTac jurisdiction | 34 | 10 to 15 | 44 to 49 | Per City of SeaTac standards for Parks, ~6:1 replacement | 204 tree plantings | OR 204 trees In-lieu fee |
| Port Property / SeaTac jurisdiction | 5 | 0 | 5 | Per City of SeaTac Development Standards, No replacement | Not applicable | Not applicable |
| Totals | 197 | 10 to 16 | 208 to 213 | | | |

* Applies to Airport Activity Area generally used for airport operations; or physically connected to the airfield, including navigational infrastructure and designated safety areas.

Obstructions on Port Property

- 158 obstructions.
- 334 replacement trees to be planted.
- Additional invasive species control and high value tree protection per Port Tree Replacement Standards.

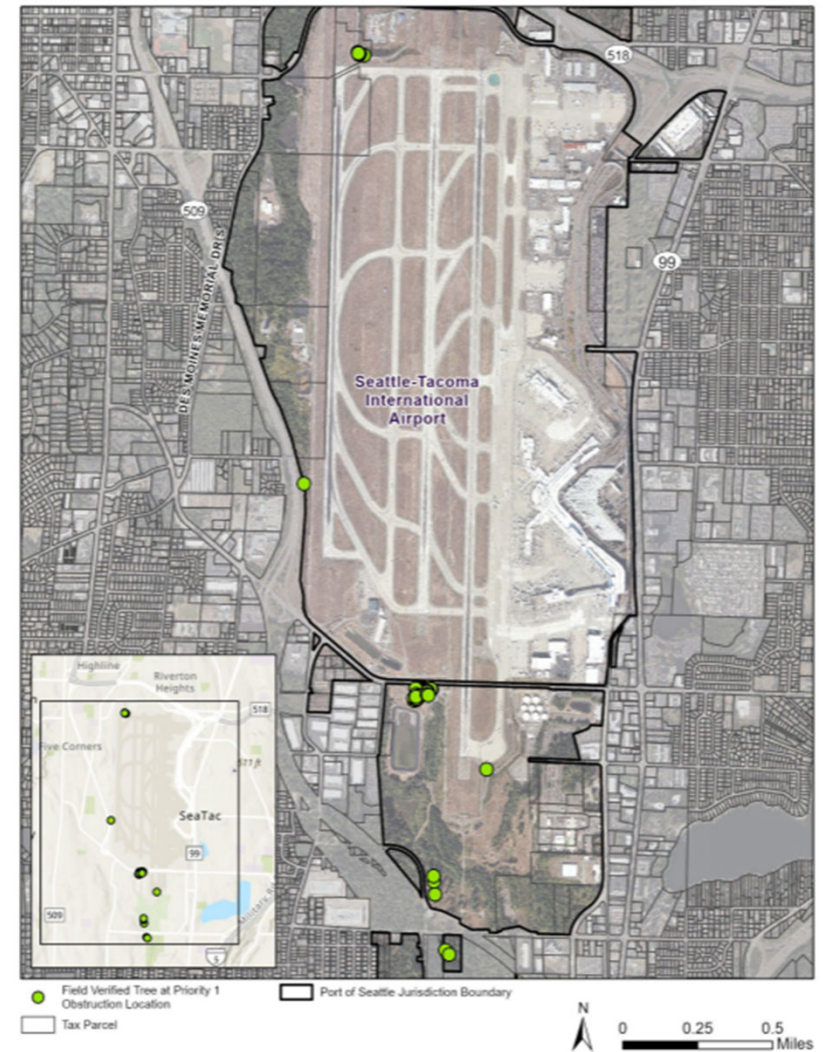


Figure 4. Location of Trees within Port of Seattle Property

Obstructions within City of Burien

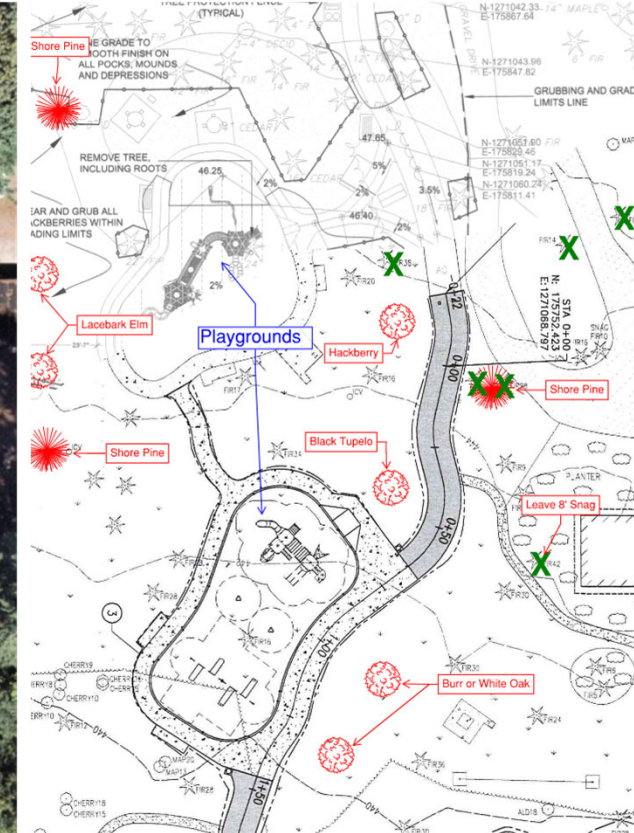
- 5 obstructions and 1 additional.
- 9 replacement trees to be planted and in-lieu fee equivalent to 9 trees.
- Per City of Burien's replacement ratio of 3:1.



Figure 7. Location of Trees within City of Burien

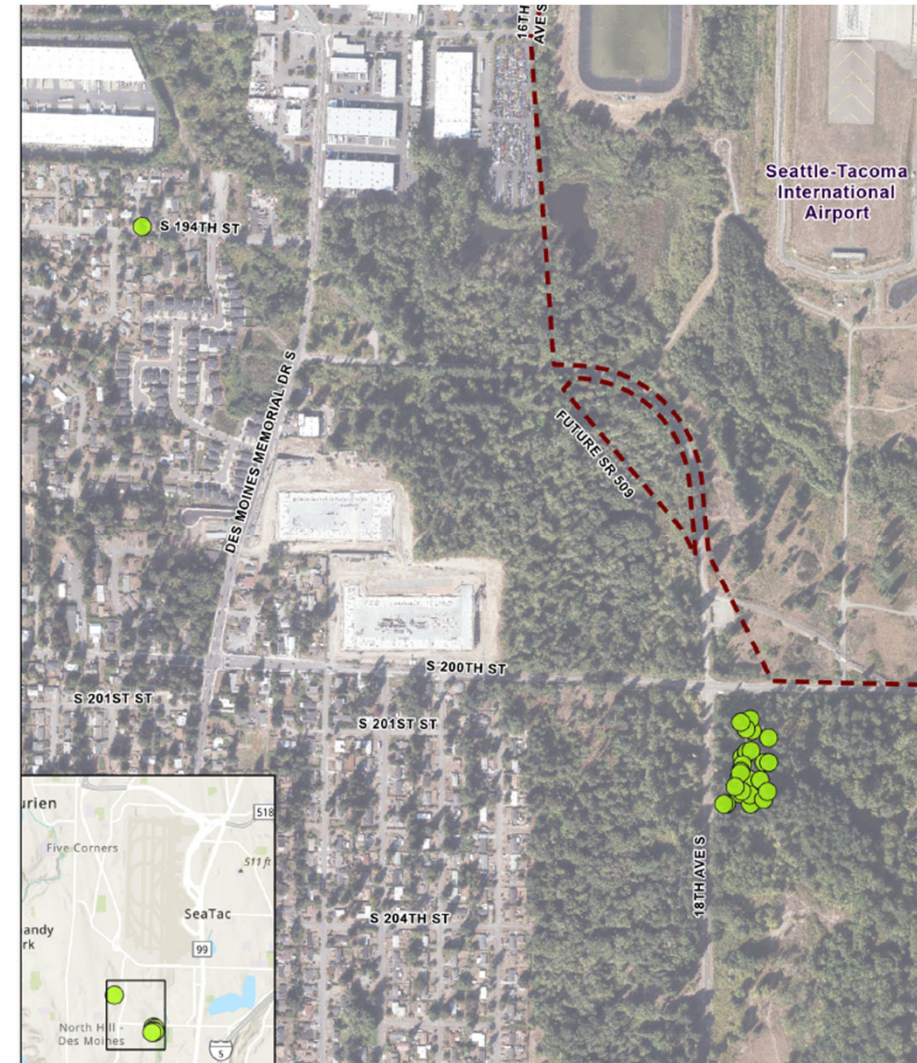
Mathison Park, Burien

- Port staff has been working with City staff since March 2025.
- Green “X”s represent trees to be removed.
- Red trees identified by type are to be planted.
- Replanted trees will be maintained by the Port for two-years.



Obstructions within City of SeaTac

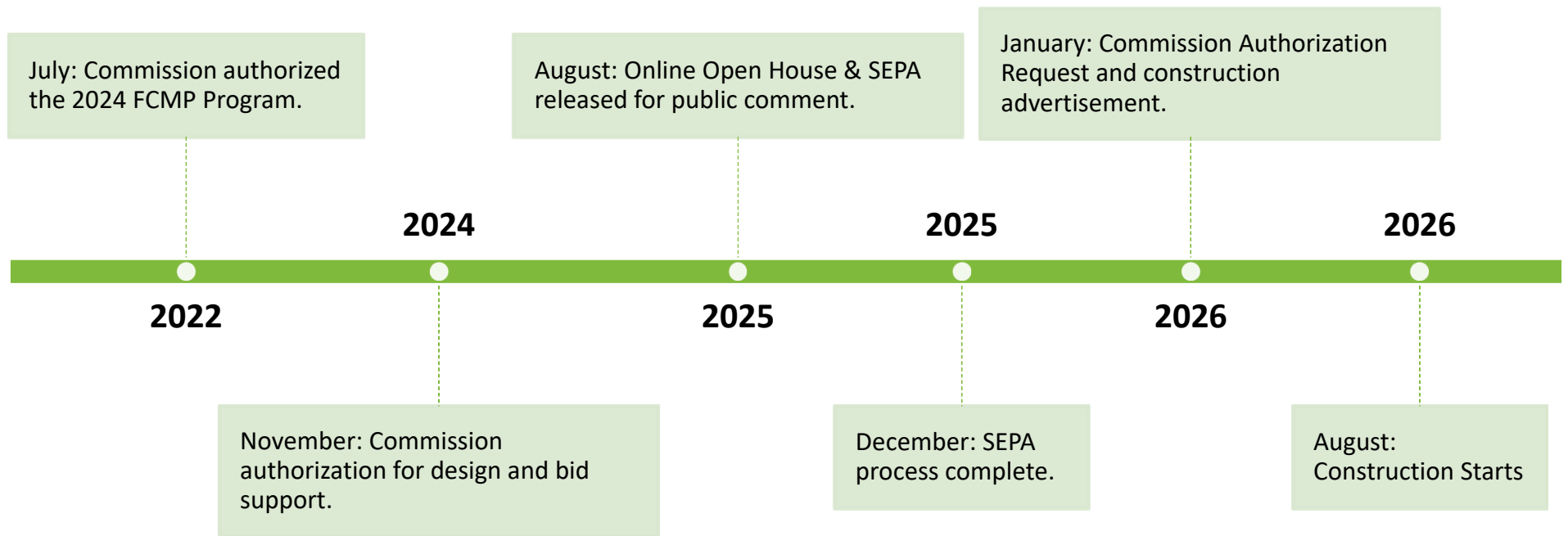
- 44 to 49 (including incidentals). All but one are in Des Moines Creek Park.
- Based on city code, we expect to plant 204 replacement trees or pay an in-lieu fee.



Options Considered

- **Topping**, or cutting the main trunk and large branches, stresses the tree, making it susceptible to disease and decay. It also creates ideal nesting conditions for birds that are a known safety risk to aircraft.
- **Crowning**, while better for a deciduous tree's health versus topping, it encourages continued growth and potential future flight surface penetration. Crowning is not viable on conifer trees which are the majority of the FCMP obstructions.
- **Lighting**, a tree only serves as a warning; it does not remove the physical obstacle. In an emergency or low-visibility situation, pilots need a clear and unobstructed flight surface. The tree will also grow up around the light, requiring on-going maintenance.

Flight Corridor Management Program Schedule



2025 Outreach, Engagement & Communications

- 03/26 Kickoff meeting with City of Burien staff
- 04/03 Kickoff meeting with City of SeaTac staff
- 08/07 Email to local councilmembers/city managers
- 08/08 Launch of new Flight Corridor website
- 8/20, 9/5, 9/19, 10/29 E-communications sent to the community
- 08/27 POS SEPA notification email sent
- 09/22 Presented at Burien City Council
- 12/05 Mathison Park Commissioner Site Tour

Thank You!



SEA

Seattle-Tacoma
International
Airport

Operated by the
Port of Seattle

[FlySEA.org](https://flysea.org)

